

25TH
MID-AMERICA
THEATRE
CONFERENCE

March 3-6, 2005
Kansas City, Missouri

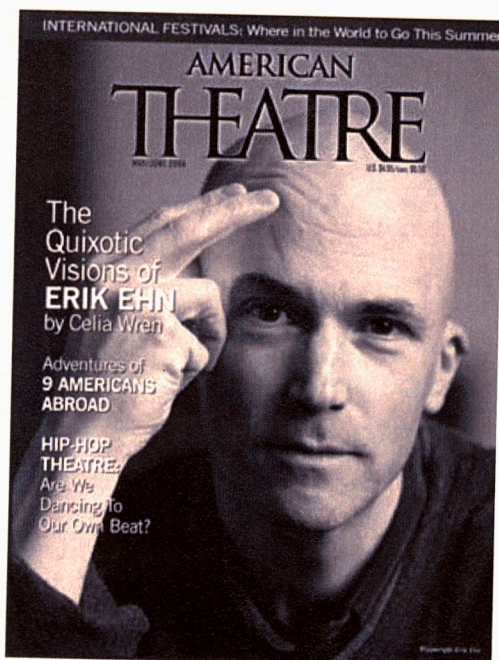


TCG INDIVIDUAL MEMBERSHIP

Become an individual member of Theatre Communications Group,

the national organization for the American theatre, and receive a FREE subscription to *American Theatre* magazine.

That's 10 issues a year—including 5 complete new play scripts, engaging artist profiles, and in-depth coverage and monthly listings of performances across the country.



ADDITIONAL MEMBER BENEFITS INCLUDE:

- 15% discount on resource materials including the *Dramatists Sourcebook*, the annual *Theatre Directory*, and the national employment bulletin *ArtSEARCH*.
- 10% discount on all books from TCG and other select theatre publishers.
- Discounts on tickets to performances at participating TCG theatres nationwide

Plus, as the primary advocate for not-for-profit professional theatre in America, TCG will ensure that your voice is heard in Washington. We invite you to join us today and receive all of TCG's member benefits!

**CALL TCG CUSTOMER SERVICE AT (212) 609-5900
OR JOIN ONLINE AT WWW.TCG.ORG.**

A Little Food...

A Little Drink...

Little Women

A Lot of Fun!

You're invited to the Rep's production of *Little Women* and a pre-show reception in honor of Mid America Theatre Conference

Friday, March 4, 2005

Kansas City Rep • Spencer Theatre 4949 Cherry Street

Reception - 7:00 pm • Show - 8:00 pm

Tickets \$22 per person

Space is limited—reserve your ticket today!

Little Women, by Louisa May Alcott, adapted by Marisha Chamberlain runs March 4-27, 2005.

Visit www.kcrep.org for show info

Little Women Co-sponsored by



Media sponsors



KANSAS CITY
REP
ERTORY
THEATRE
The professional theatre in residence at UMKC

Order tickets at 816-235-2700 and mention you are with the Mid America Theatre Conference

MATC

**24th
ANNUAL**

Mid-America Theatre Conference

March 3-6, 2005

**Hyatt Regency Crown Center
Kansas City, Missouri**

MATC Officers

President: John Poole, Illinois State University

1st Vice President: Bill Jenkins, Ball State University

2nd Vice President/Conference

Planner: Mary Cutler, University of North Dakota

Associate Conference Planner: Ann Haugo, Illinois State University

Secretary: Mark Mallett, Richard Stockton College

Treasurer: Deanna Toten Beard, Baylor University

Theatre History Studies, the journal of the Mid-America Theatre Conference

Editor, Bob Schanke, Professor Emeritus, Central College

Book Review Editor and Incoming Editor, Rhona Justice-Malloy, Central Michigan University

Program Design: John Walker, College of Fine Arts, Illinois State University

Cover Art: Dallas Jeffers-Pollei, School of Theatre, Illinois State University

MATC logo design: John Walker, College of Fine Arts, Illinois State University

Symposia Chairs

Theatre History Symposium
 Stacey Connelly, Trinity University
 Mark Cosdon, Allegheny College

Directing Symposium
 Gaye Burgess, University of North Dakota
 Chuck Ney, Texas State University-San Marcos

Playwriting Symposium
 David Crespy, University of Missouri
 David Rush, Southern Illinois University Carbondale

Pedagogy Symposium
 Rebecca Fishel Bright,
 Southern Illinois University Carbondale
 Anne Fletcher, Southern Illinois University Carbondale

Emerging Scholars Symposium
 Scott Magelssen, Augustana College

Symposium Themes

Theatre History Symposium:
 Theatre as Celebration: From Classics to the Carnavalesque

Playwriting Symposium:
 Another Way to Work: Non-Traditional Ways to Make Plays

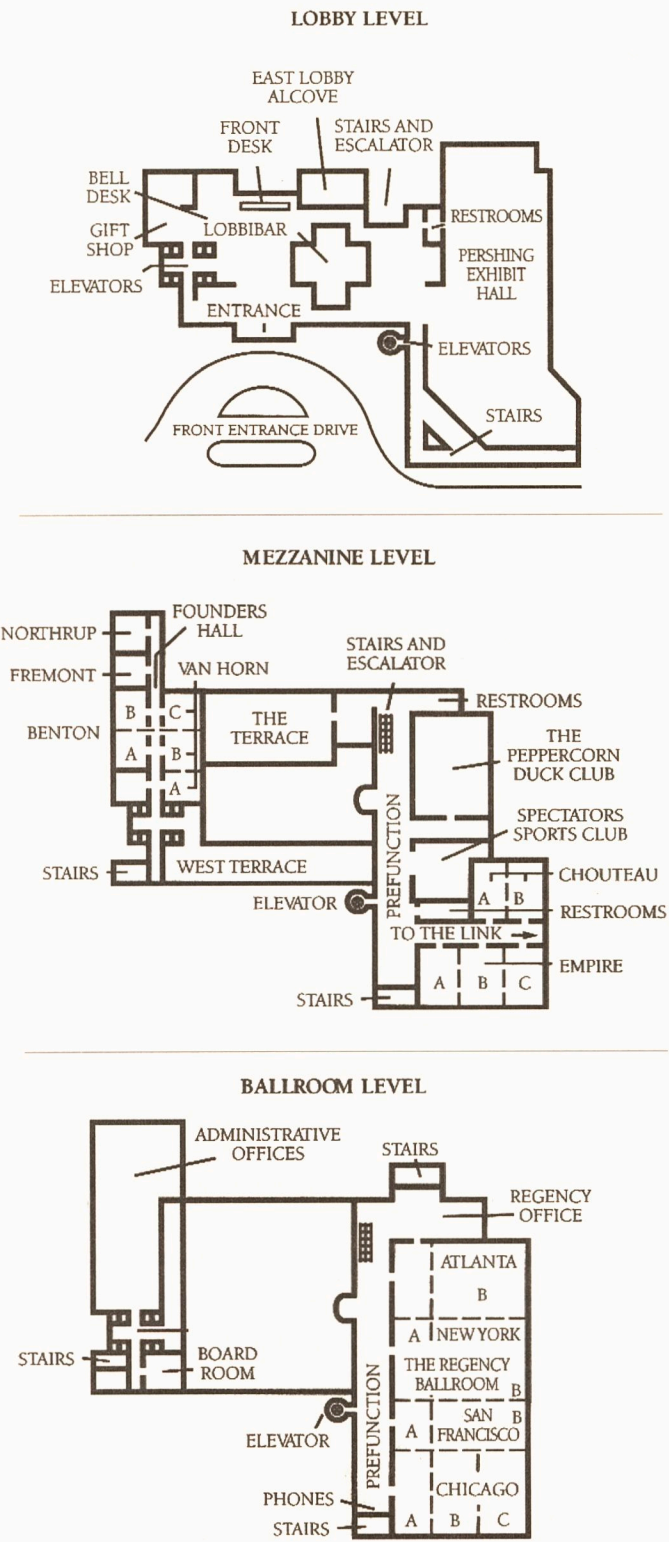
Directing Symposium:
 (Re)defining Power and Collaboration in the 21st Century

Pedagogy Symposium:
 Celebrating Change and Growth: Twenty-five

MATC Fellows

Arthur Ballet, 1988
 Jed Davis, 1988
 Patricia McIlrath, 1988
 Charles Shattuck, 1990
 Ron Engle, 1993
 Burnet Hobgood, 1994
 Glen Q. Pierce, 1997
 Julia Curtis, 1999
 Tice Miller, 2001
 Felicia Londre, 2002
 Robert Schanke, 2002
 Weldon Durham, 2003
 Fergus Currie, 2005

Hotel Map



Conference Room Assignments

Please note that room assignments change daily. Refer to the conference hotel map and the panel descriptions for room locations.

Local Transportation Information

MATC will not be operating its own shuttle between our conference and the ATDS conference in Lawrence, but a local shuttle, KCI Shuttle, does run a shuttle between Kansas City and Lawrence. You can reach KCI Shuttle at 816-243-5000 for more information.

THURSDAY MARCH 3rd

Registration: 12 noon – 9 p.m. Empire Foyer

Session #1: 1:00-2:15

Theatre History Symposium: Staging Family Values

Empire A

- Chair: Natalie Goodnow, Southwestern University
DeAnna Toten Beard, Baylor University, Father's a Drunkard and Mother is Dead! Theatre and Theatricality in the Woman's Christian Temperance Union
Kathleen McLennan, University of North Dakota, A Celebration of the Body: Redemption and Morality in O'Neill's *Desire Under the Elms*
C. Patrick Tyndall, University of Arkansas, 'You Don't Sing to Feel Better. You Sing Cause That's a Way of Understanding Life.': August Wilson's Plays as a Celebration of African-American Life

Directing Symposium: Pioneers in Power Transformation

Empire B

- Chair: John Chase Soliday, University of Miami
Daryl Worley, Baylor University, Tennessee's Texas Tornado: Margo Jones and *Summer and Smoke*
Season Ellison, Texas State University, *The Laramie Project*: A Case Study for the Collaborative Ideal
Kristin Hanson, Louisiana State University, Lesbians in the Bible Belt

Pedagogy Symposium: Assessment

Empire C

- Chair: Mark Mallett, Richard Stockton College
Kim Harris, William Jewell College, Synthesis Approach to Theatre Curricular Design
Mark Mallett, Richard Stockton College, Re-locating the Absent Teacher: Using Performance Criticism as an Assessment Rubric
Christine Frezza, Southern Utah University, Student Self-Assessment of the Senior Project

Session #2: 2:30-3:45 (Thursday)

Theatre History Symposium: Staging Pageantry and Display

Empire A

- Chair: Bob Schanke, Central College
Denise Cole, Central Michigan University, Audiences at Early Tudor Christmas Festivals
Ellen M. Peck, University of Illinois, The Stuart Masque as Celebration
Christopher Scully, Tufts University, Baker's Pilgrims: Society and the Individual at the 1921 Pilgrim Pageant

Directing Symposium: Power Dynamics of Directing: Case Studies

Empire B

- Chair: Jim Williams, University of North Dakota
Nathan Wylie, Texas State University, The Shape of Things to Come: Creating and Executing a Directorial Vision for Neil LaBute's *The Shape of Things*
Heather Williams, Bowling Green State University, The Power of the Method
Daniel Inoyue – Baylor University, Let's Get Ready to Rumble: Aristophanic Comedy as a Wrestling Match in *The Knights*

Pedagogy Symposium : Using Performance in Non-Performance Theatre Classes: History, the "Isms" and the "Three Little Pigs"

Empire C

- Chair: Becca Fishel Bright, Southern Illinois University Carbondale
Elizabeth Cawns, Louisiana State University
Elissa Sartwell, Louisiana State University
Don Whittaker, Northwestern University

Session #3: 4:00-5:15 (Thursday)

*Theatre History Symposium: **Recasting Antiquity***

Empire A

Chair: Robert Gross, Hobart and William Smith Colleges
Dawson Nichols, University of South Carolina, *The Civic Origins of Greek Tragedy*
William Van Watson, University of Arizona, *Family Fascism: Re-staging Oedipus Rex as Nazi Spectacle in Alberto Moravia's // Dio Kurt*
George Panaghi, City University of New York, *Bacchic Celebration Today: A Party with a Story*

*Playwriting Symposium: **Thinking Beyond the Black Box: Different Ways of Creating Plays***

Empire C

Chairs: David Rush, Southern Illinois University Carbondale, David Crespy, University of Missouri
Penelope Cole and Dr. Steven Hayes-Pollard, *12 Students: A New Play and the Edinburgh Festival Fringe*
Shirley Huston Findley, College of Wooster, *Creativity and Dementia: Collaborative Playwriting between Academia and the Elderly*
Ara Beal, Miami University of Ohio, *Polyphonic versus Monophonic Works: Approaches to Dostoevsky*

*Pedagogy Symposium: **What Are My Options? Creating a Custom Text and Anthology of Plays for the Introductory Course***

Empire B

Chair: Anne Fletcher, Southern Illinois University Carbondale
Scott R. Irelan, Southern Illinois University Carbondale
Ken Bright, Southern Illinois University Carbondale
John Ray Sheline, Southern Illinois University Carbondale
Constance Frank, Southern Illinois University Carbondale/Western Kentucky College
Thom Miller, Southern Illinois University Carbondale
Eileen Townsend, Publisher's Representative, Pearson Allyn & Bacon/Pearson Longman
Mark A. Wilks, Acquisitions Editor, Pearson Custom Publishing
Tony Bolfeta, Acquisitions Editor, Pearson Custom Publishing

5:15 – 6:15 (Thursday)

*Pedagogy Symposium Special Session: **Great Ideas for Teaching Theatre – A Participant-Driven Swap Shop***

Empire B

Facilitators: Becca Fishel Bright and Anne Fletcher, Southern Illinois University Carbondale
Have a great idea for that theatre class, or do you desperately need one? Join us to share ideas and resources.

Karen Paisley, *Director of Education and Outreach and Literary Associate for the Kansas City Repertory Theatre, joins us for two panels for this conference. Meet with her on Friday in a special brown-bag session from 12:15 - 1-15 sponsored by the Pedagogy Symposium, "So We're Going to the Theatre; Really? Why?" and in the Playwriting Symposium's Marquee Panel on Saturday from 10:30 - 11:45, "Another Way to Work: Developing New Plays in Mid-America." Paisley also assisted the Playwrighting Symposium this year with its ten-minute plays workshop, which MATC members can see on Saturday at 3:15 pm.*

A professional performer, director, writer, award-winning educator, and arts advocate, Paisley is also a former Teacher of the Year nominee. She holds an M.F.A. from Sarah Lawrence College in New York and her undergraduate degree from the University of North Carolina at Greensboro. Since arriving at UMKC, she has extended the Rep's Education and Outreach programs to achieve record levels. She founded the Rep's Collaborative Lab, an ensemble-based professional theatre workshop that provides ongoing artistic training to the professional theatre community, and created new outreach programs to serve Kansas City through programs like Rep on the Road, Scripts to Schools, the Conversations Series, and STARS. She has also written several plays, has a novel and screenplay in the works, and is passionate about the development of new work and the critical place of the arts in our lives.

Session #4: 6:30-7:45 (Thursday)

Theatre History Symposium: Reinventing the Classics

Empire A

Chair: Jerry Dickey, University of Arizona

Jodi Van Der Horn-Gibson, Arizona State University, Little Black

Sambo: Social Agitation in Children's Theatre Clothing

Julia Curtis, Professor Emerita, University of Nebraska - Omaha,

Hedda Plays John Cage

Ellen MacKay, Indiana University, Toward a New Theatre History of

Dionysus

Directing Symposium: Approaches to Working with

Collaborators: Overviews

Empire B

Chair: Jennifer Blackmer, Ball State University

Tom Mitchell, University of Illinois at Urbana-Champaign,

Identifying Collaborative Approaches of Directors, Designers,
and Performers

Chuck Ney, Texas State University, Artistic Directors Work on

Shakespeare with Directors

Natalie Joy Quesnel, University of Ottawa, Microsociology and

Social Groups: The Director and His Production Team

Playwriting Symposium: New Play Development in the Academy:

**The Shifting of Non-traditional Play Development from the
Professional to the University Stage**

Empire C

Chair: John W. Wright, University of Wisconsin – Manitowoc

John W. Wright, University of Wisconsin – Manitowoc, From Non-

Profit to the Academy: The SITI Company and New Play

Development on the University Stage

David A. Charles, Rollins University, Exploring Connections:

Improvisational Playwriting on Your Feet in the Academy

Marla Dean, University of Montevallo, Development on Its Feet:

Collaborative Vision of Director and Playwright in Academia

Session #5: 8:00-9:15 (Thursday)

Theatre History Symposium: Revisionism through Re-Enactment

Empire A

Chair: Roger Bechtel, Illinois Wesleyan University

Tice Miller, University of Nebraska, The Debauching of American

History in Early Nineteenth Century American Drama

Kimberly Tony Korol, Northwestern University, Historical

Elaboration at the Maryland Renaissance Festival: Katherine's

Story, Queen Anne's Arrest, and Jane's Betrothal

Jerry Dickey, University of Arizona, 'The Revolution Comes Home':

Performance and Historical Enactment at Colonial Williamsburg

Directing Symposium: (Re)defining the Director: To Be or Not to

Be, That Is the Question (A Roundtable Discussion)

Empire B

Chair: Mary Cutler, University of North Dakota

Mary Jo Sodd, Central College

Dr. Jon Berry, University of Minnesota – Duluth

Dr. Jim Williams, University of North Dakota

David Rush, Southern Illinois University Carbondale

Gaye Burgess, University of North Dakota

Pedagogy Symposium: Experiments and Expectations:

**Pedagogical and Technological Uncertainties and
Possibilities for the Introduction to Theatre Course**

Empire C

Chair: Anne Fletcher, Southern Illinois University Carbondale

Michael O'Hara, Ball State University

Cheryl Black, University of Missouri—Columbia

David Kilpatrick, University of Missouri—Columbia

Kristin Messer, University of Maryland—College Park

Julie Rae Pratt, Central Missouri State University

Fellows' Opening Night Reception and Graduate Student

Meet and Greet

9:30 am – 12 midnight

The Terrace

Hors d'oeuvres & cash bar

FRIDAY MARCH 4th

Registration: 8 a.m. – 6 p.m. Founder's Foyer

Continental Breakfast 8 - 9 am Founder's Foyer

Session #6: 9:00-10:15

Theatre History Symposium: The Redefinition of Space in Weimar Dance and Performance

Van Horn AB

Chair: Stacey Connelly, Trinity University
Deidre Onishi, University of Wisconsin, Cutting Diagonals in Space:
Dance and Laban's Crystal
Erika Hughes, University of Wisconsin, Valeska Gert and the
Subversion of Space
Annette Thornton, University of Colorado, Boulder, Lotte Goslar's
The Disgruntled

Directing Symposium: Expanding Notions of Directorial Text

Van Horn C

Chair: Karen Kessler, Ball State University
Sebastian Trainor, University of Washington, Cabbages and the
King of Kings: De-formation, Figura, and Reality in Edward
Hall's *Rose Rage*
David Charles, Rollins College, Crossing Boundaries: On Directing
in the Improv Stage
Peter A. Campbell, Penn State Berks – Lehigh Valley College,
Staging Phaedra's Love: Violence and Directorial Power

Pedagogy Symposium: Part I of a Double Session – Practical Exercises for Use in Class

Fremont Room

Chairs: Becca Fishel Bright and Anne Fletcher, Southern Illinois
University Carbondale
Bill Kincaid, Western Illinois University, Making Meter Count:
Exercises for Enhanced Rhythm Awareness
John Chase Soliday, University of Miami, Looking for Your Family
Tree Through Theatre History
Rhona Justice-Malloy, Western Michigan University, Teaching
Theatre Management: Toward a Theory of Producing

Session #7: 10:30-11:45 (Friday)

Theatre History Symposium: Shaping National Identities

Van Horn AB

Chair: Kathleen McLennan, University of North Dakota
Kristin Crouch, Trinity University, Discovering Our Other Selves:
Celebrating Identity in Twenty-First Century Scottish Drama
Mikko Kivisto, University of Illinois, Celebrating 'Authentic History':
Staging the Canadian Northwest Rebellion in *Beyond Batoche*
Natalie Goodnow, Southwestern University, Shakespeare: A Part
of Japanese Culture

Directing Symposium: Exploring Boundaries, Part I –

Collaborators (A Panel Discussion)

Van Horn C

Chair: Kevin Orr, University of Ottawa
Mo Ryan, Ohio State University
Bruce Herman, Ohio State University
Jeanie Thompson, Ohio State University

Pedagogy Symposium: Part II of a Double Session – Pedagogy

Idea Exchange

Fremont Room

Facilitators: Becca Fishel Bright and Anne Fletcher, Southern
Illinois University Carbondale

LUNCH BREAK: 12:00-1:15 (Friday)

or

Special Brown-Bag Sessions: 12:15 – 1:15

Pick up a lunch to go and come join us for special brown-bag sessions.

Emerging Scholars Symposium: Undergraduate Debut Panel

Van Horn AB

Chair: Scott Magelssen, Augustana College
Emily Schaeffer, Northwestern University, The Performance of Protests: Why Do We Do It?
Thomas J. Murray, Ball State University, Blurred Lenses and Silenced Thoughts: Brian Friel's Dramatic Use of Memory to Sustain or Improve upon Ireland's Failed Fathers
Leah Napoliello, Trinity University, 'Confronting the Ultimate:' Sarah Kane's Theatrical Vision

Pedagogy Symposium Special Session: So We're Going to the Theatre; Really? Why?

Fremont Room

Karen Paisley, Director of Education and Outreach, Kansas City Repertory Theatre
Facilitators, Becca Fishel Bright and Anne Fletcher, Southern Illinois University Carbondale
Bring your lunch and join us for a lively discussion on relevance. Theatre and education are undeniably intertwined. Ms. Paisley will link this notion to audience development and outreach and provide helpful suggestions for how we all can be more cognizant of ways to reach our audiences and build community through our productions.

Directing Symposium Special Session: Frustration of the Collaborative Process: Much Ado About Nothing?

Van Horn C

Chair, Chuck Ney, Texas State University
Karen Kessler, Ball State University
Kevin Orr, University of Ottawa
Robert Ball, University of the Incarnate Word

Session #8: 1:30-2:45 (Friday)

*Theatre History Symposium: Mount Rushmore:
Inscribing/Reinscribing the Presidential Myth*
Van Horn AB

Chair: Tice Miller, University of Nebraska
Kenneth W. Haught, Dickinson State University, Celebrating Theodore Roosevelt and the Values of the Heartland: Old Four Eyes and *The Medora Musical*
Michael Mehler, College of William and Mary, The Founding Father of American Identity: Percy MacKaye's Washington Plays
Scott Irelan, Southern Illinois University at Carbondale, Searching for Reassurance, Reviving Public Confidence: Sherwood, Roosevelt, and *Abe Lincoln in Illinois*

Directing Symposium: Exploring Boundaries, Part II – Media (A Panel Discussion)

Van Horn C

Chair: Robert Ball, University of the Incarnate Word
Katie Whitlock, Ohio State University, Rewiring the Director: Tradition vs. New Media
John Chase Soliday, University of Miami, Multimedia Theatre Collaboration: Designer, Director, and Actor – The Laterna Magika National Theatre of Prague, Finding the Balance
Bethany Larson, Buena Vista University, Dazed and Amazed: How Live Theatre and Broadcast Performance Confounded and Expanded Audience Expectations

Pedagogy Symposium: The Tony Kushner Project: Pedagogical Musings in Retrospect

Fremont Room

Chair, Becca Fishel Bright, Southern Illinois University Carbondale
Kathleen Juhl, Southwestern University
Sergio Costola, Southwestern University
Liam Boyer, Southwestern University
Claire Baker, Southwestern University

3:00-4:15 (Friday)

All-Conference Plenary

MATC Then and Now

Van Horn AB

Join us for a panel presentation by some of MATC's founders and former presidents, as they reflect on the birth, growing pains, evolution and growth of MATC.

Chair: Fergus G. Currie, Professor Emeritus, Illinois State University
Julia Curtis, Professor Emerita, University of Nebraska-Omaha
Tice Miller, Professor of Theatre, University of Nebraska, Lincoln
Kent Neely, Dean, College of Arts and Sciences, Southern Illinois University Edwardsville

Bob Schanke, Professor Emeritus, Central College

Judith Zivanovic, Professor Emerita, Kansas State University

Session #9: 4:30-5:45 (Friday)

Theatre History Symposium: Music as Metaphor

Van Horn AB

Chair: Ann Haugo, Illinois State University

Albert J. DeGiacomo, Berea College, Joycean Celebration: The Dead Dances on Broadway

Henry MacCarthy, Ohio University, Spectacular Representations of the 'Internal Other': The Mulata in Cuban Zarzuela

Peter Reed, Florida State University, 'Come Let Us Dance and Sing': The Persistence of a Transatlantic Celebration

Pedagogy Symposium: Interdisciplinary Theatre

Van Horn C

Chair: Cyndee Brown, Illinois State University

Sharon Andrews and Brook M. Davis, Wake Forest University, A Story of Us and Them: Student Athletes Explore, Create and Perform

Pattie Interrante and Mike Malloney, Oakland College, Tandem Course in Psychology and Acting

Felicia Ruff, Wagner College, In the Closet of Genet's *The Maids* or, The Boy with the Rubber Gloves

Playwriting Symposium: Interactive Multimedia and Scripting

Fremont Room

Chair: Dan Zellner, Northwestern University

Dan Zellner, Northwestern University

Kathryn Farley, Northwestern University

Join us in Chicago for the 26th Annual MATC Conference, March 2-5, 2006, at the Allerton-Crowne Plaza Hotel. Watch for updates on the MATC website at www.matc.us.

SATURDAY MARCH 5th

Registration 8 am – 6 pm Founder's Foyer

Continental Breakfast 8 - 9 am Founder's Foyer

Session #10: 9:00-10:15

Theatre History Symposium: Angels Celebrating American Theatre

Benton Room

Chair: Mark Cosdon, Allegheny College
Bob Schanke, Central College, Patrons of Eva Le Gallienne
David Crespy, University of Missouri at Columbia, Grant Goodman,
an Alternative Theatre Angel
Kathy L. Privatt, Lawrence University, Modern Medicis: The Disney
Corporation

Directing Symposium: Directorial Power in Collaboration

Fremont Room

Chair: Jane Purse-Wiedenhoeft, Indiana University/Purdue
University—Ft. Wayne
Janet Wilson and Lori Adams, Illinois State University,
Entrepreneurship and Seeking Tenure: A Model of Directorial
Empowerment and Collaboration
Jennifer Blackmer and Wendy Mortimer, Ball State University,
Process Over Product...Practicing What We Preach

Playwriting Symposium: Biographical and Autobiographical Approaches to Non-fiction Playwriting

Northrup Room

Chair: Sally Bailey, Kansas State University
Alissa Duncan, Kansas State University
Stacey Pierce, Kansas State University
Amanda Petrosky, Kansas State University

Session #11: 10:30-11:45 (Saturday)

Theatre History Symposium: To Celebrate or Not to Celebrate

Benton Room

Chair: Kristin Crouch, Trinity University
Teodora Nikolova, University of Wisconsin – Madison, State
Parades in Eastern Europe During the Cold War Period
George Potter, Indiana State University, Too Many Presidents:
House Arrest and the Failure of Postmodern Ethnography
Roger Bechtel, Illinois Wesleyan University, Feting the Fringe:
Alternative Theatre and Cultural Production

Directing Symposium: Emerging Processes and Power Structures

Fremont Room

Chair: Janet Wilson, Illinois State University
Jane Purse-Wiedenhoeft, Indiana University/Purdue University-
Fort Wayne, Passion as Power in the Collaborative Process
Between Directors and Actors: Communicating Passion as the
Director of Jane Martin's *Talking With*
Tamera N. Izlar, Ancient Rhythmic Voices Deeply Rooted within the
African Tradition of Drumming and Its Impact on Movement,
Script Analysis, and Contemporary Directors
Karen Kessler, Ball State University, Affording Actors Power: Re-
defining the Director/Actor Relationship

Marquee Panel

Playwriting Symposium: Another Way to Work: Developing New Plays in Mid-America

Northrup Room

Chairs: David Crespy, University of Missouri-Columbia, and David
Rush, Southern Illinois University Carbondale
Karen Paisley, Literary Manager & Educational Outreach, Kansas
City Repertory Theatre
David McTier, Rockhurst University
Frank Higgins, University of Missouri-Kansas City
Roger Gross, University of Arkansas

12:00-2:00 (Saturday)

ALL CONFERENCE LUNCHEON, followed by Conference Keynote address by Jessica Blank and Erick Jensen

Chicago Room

Conference Keynote: Jessica Blank and Erik Jensen

Blank and Jensen's 2002 play *The Exonerated* has accumulated an impressive list of nominations and awards. Telling the story of six former death-row inmates, *The Exonerated* is based on interviews that Blank and Jensen conducted with more than 40 wrongfully convicted death row inmates in the United States. The 2003 New York City production of *The Exonerated*, directed by Bob Balaban, won the Outer Critics Circle Award for Outstanding Off-Broadway Play, a Drama Desk Award, and the Lucille Lortel Award and was nominated for the Dramatists' Guild's Hull-Warriner Award and the John Gassner Playwriting Award. A production co-directed by Blank and Jensen at Tim Robbins' Actors' Gang Theater was nominated for five Ovation Awards including Best Director and three NAACP Awards. It won the Ovation for Best World Premiere Play. The script was recently made into a Court TV special. Blank and Jensen have received numerous awards themselves for their work on the play, including the Justice in Arts and Media Award from Death Penalty Focus and the 2003 Defender of Justice Award from the National Association of Criminal Defense Lawyers.

2:00 – 3:00

MATC BUSINESS MEETING

Benton Room

All MATC members are encouraged to attend.

Session #12: 3:15-4:30 (Saturday)

Emerging Scholars Symposium: Graduate Student Debut Panel

Benton Room

Chair: Scott Magelssen, Augustana College

Elizabeth Long, University of Maryland, *Narrow Limits: Design*

Elements of the Folger Theatre

Hope Davis, Bowling Green State University, *A Poetics of the Parade*

Jacob Hutchison, University of Washington, *The Robin Hood*

Traditions and the English Reformation

Directing Symposium: Exploring Power/Control Structures

Fremont Room

Chair, Peter Campbell, Penn State Berks—Lehigh Valley College

Dale J. Young, Bowling Green State University, *It's a Play About a*

Table: *Exploring the Relationships of Director and Ensemble in a Newcomers Performance*

Jim Williams, University of North Dakota, *Advancing in the*

Beginning Directing Curriculum and Beyond: Student

Empowerment of Directorial Interpretation and Collaboration

Kevin Orr, University of Ottawa, *Director Inversion: Removing the*

Crown and Gaining the Kingdom

Playwriting Symposium: New Ways to Wright Plays: An Afternoon of Ten-Minute Plays I

Northrup Room

Double Session: continues to 6 p.m.

Chair: David Crespy, University of Missouri-Columbia

A Good Girl Gone Bad Sometimes by Pat Downey

Our Lady of Columbia by David J. Eshelman

Sumatra Mandheling by Jakob Holder

Under Cover by G.L. Horton

The War of Virginia and Alabama by Dawson Moore

Ed Rex by David Robson

Pearl by John Ray Sheline

Produced by Karen Paisley, Kansas City Repertory Theatre,

Collaborative Lab

Session #13: 4:45-6:00 (Saturday)

Theatre History Symposium: Engendered Performance as Celebration

Benton Room

Chair: Kathy Privatt, Lawrence University
John S. Sebestyen, Bowling Green State University, Celebrating the
Voices of Women: Overt Resistance to the Holocaust
Rebecca Cameron, DePaul University, Top Girls: Feminist
Celebrations of Great Women from Suffrage Pageants to
Churchill
Robert Gross, Hobart and William Smith Colleges, Celebrating
Opposition? The Ambivalences of Mrs. Farnsworth

Directing Symposium: Approaches to Directing Text

Fremont Room

Chair: Tom Mitchell, University of Illinois Urbana-Champaign
Robert Ball, University of the Incarnate Word, Where Directorial
Text Begins and Ends
V. Arumughan, Pondicherry University, India, The Use of Props
Theatre and Vertical Theatre Concepts in Directing Non-Text
Based Productions
Greg Leaming, Florida State University-Asola, New Playwrights as
Co-collaborators

Playwriting Symposium: Ten-Minute Plays Presentation II

Northrup Room

Chair: David Crespy, University of Missouri

**SUNDAY
MARCH 6TH**

(Please note that there will be no continental breakfast available Sunday morning.)

Registration 8 am - 12 noon Empire Foyer

Session #14: 8:00-9:15

Theatre History Symposium: American Identities on Stage

Chair: DeAnna Toten Beard, Baylor University
Kate Roark, University of Illinois, 'He Tried a Nigger Dance, With
Which He Left the Stage': Using Racial Ideology to Explain Why
New York's Celebrated Yankee Comedians Were Not Celebrated
in London, 1827-1844
Kirsten Ogden, Louisiana State University/University of La Verne,
The New American Identity in *The Octoroon*
Carrie J. Cole, University of Maryland, 'A Visible Manifestation of the
Community Soul: The Democratic Celebration in Early Twentieth
Century Pageantry and Masques

Theatre History Symposium: Drama and Religious Traditions

Empire B

Chair: Rebecca Cameron, DePaul University
Joly Puthussery, University of Hyderabad, India, An Indian Magi Play:
A Community Celebration for Identity
Christina Ritter, Ohio State University, The Nova Jerusalem Passion
Play: Religious Drama and 'Authenticity.'
Joshua Polster, University of Washington, The Jews of Medieval
York: The Corpus Christi Plays and the Image of the Other

*Pedagogy Symposium: Integrating Teaching Assistants into the
General Education Theatre Course; or, The Care and Feeding
of Graduate Assistants*

Empire B

Cyndee Brown, Illinois State University
Ann Haugo, Illinois State University
Steve Bayer, Illinois State University
Courtney Bohl, Illinois State University
Matthew Fotis, Illinois State University
Dallas Jeffers-Pollei, Illinois State University
Mary Schmolke, Illinois State University
David Sollish, Illinois State University
Jill Swartzmiller, Illinois State University

Theatre History Symposium: Conference Respondent

Empire A

Felicia Hardison Londré, University of Missouri at Kansas City

Pedagogy Symposium: E-Theatre

Empire C

Chair: Cyndee Brown, Illinois State University
Chris Gray, Iowa Western Community College, E-Theatre? A Look at the Online Teaching of Introduction to Theatre
Katie Whitlock, The Ohio State University, The Battle to Balance Technology with Teaching
Jodi Van der Horn-Gibson, Arizona State University, Critical Cyber-learning? How Can Teaching Online Theatre History Embody a Critical Pedagogy?

Playwriting Symposium: Workshops That Have Worked:

Descriptions of Interactive Projects

Empire C

Chair: David Rush, Southern Illinois University at Carbondale
Adrienne Adderley, University of Missouri—Columbia, Right-Brain, Left-Brain: Games for Playwrights
Leigh Kennicott, The How and Why of Team Playwriting
Matt Fotis, Illinois State University, Scriptprov: Developing Written Materials from Improv

Directory

Lori Adams	Illinois State University	ljadams@ilstu.edu
Adrienne Adderley	University of Missouri-Columbia	amavf6@mizzou.edu
Sharon Andrews	Wake Forest University	Andrews@wfu.edu
V. Arumughan	Pondicherry University	drvarumugham@yahoo.com
Sally Bailey	Kansas State University	sdbailey@ksu.edu
Claire Baker	Southwestern University	bakerc@southwestern.edu
Robert Ball	University of the Incarnate Word	ball@universe.uiwtx.edu
Steve Bayer	Illinois State University	sdbayer@ilstu.edu
Ara Beal	Miami University of Ohio	bealag@muohio.edu
DeAnna Toten Beard	Baylor University	DeAnna_Toten_Beard@baylor.edu
Roger Bechtel	Illinois Wesleyan University	rbechtel@titan.iwu.edu
Jon Berry	University of Minnesota-Duluth	jberry@d.umn.edu
Cheryl Black	University of Missouri-Columbia	BlackC@missouri.edu
Jennifer Blackmer	Ball State University	jsblackmer@bsu.edu
Courtney Bohl	Illinois State University	cmbohl@ilstu.edu
Tony Bolfeta	Pearson Custom Publishing	Tony.Bolfeta@PearsonCustom.com
Liam Boyer	Southwestern University	boyer1@southwestern.edu
Ken Bright	Southern Illinois University Carbondale	kbright@siu.edu
Rebecca Fishel Bright	Southern Illinois University Carbondale	rfishel@siu.edu
Cyndee Brown	Illinois State University	clbrown3@ilstu.edu
Gaye Burgess	University of North Dakota	gaye.burgess@und.nodak.edu
Rebecca Cameron	DePaul University	RCAMERON@depaul.edu
Peter A. Campbell	Penn State Berks Lehigh Valley	Pac22@psu.edu
Elizabeth Cawns	Louisiana State University	ecawns1@lsu.edu
David A. Charles	Rollins University	David.A.Charles@Rollins.edu
Carrie J. Cole	University of Maryland	carriejcole@hotmail.com
Denise Cole	Central Michigan University	cole1d@cmich.edu
Penelope Cole		pwcole@yahoo.com
Stacey Connelly	Trinity University	sconnell@trinity.edu
Mark Cosdon	Allegheny College	mark.cosdon@allegheny.edu
Sergio Costola	Southwestern University	costolas@southwestern.edu
David Crespy	University of Missouri-Columbia	crespyd@missouri.edu
Kristin Crouch	Trinity University	Kristin.Crouch@Trinity.edu
Fergus Currie	Illinois State University	fcurrie@dc.rr.com
Julia Curtis	Univ. of Nebraska at Omaha (Emeritus)	MaryJuliaC@aol.com
Mary Cutler	University of North Dakota	Mary_cutler@und.nodak.edu
Brooke Davis	Wake Forest University	davisb@wfu.edu
Hope Davis	Bowling Green State University	hdavis@bgnet.bgsu.edu
Marla Dean	University of Montevallo	DeanMK@Montevallo.edu
Albert J. DeGiacomo	Berea College	Albert_DeGiacomo@bera.edu
Jerry Dickey	University of Arizona	jdickey@email.arizona.edu

Pat Downey		
Marie Draz	Southwestern University	drazm@southwestern.edu
Stephanie Dunbar	Southwestern University	dunbars@southwestern.edu
Alissa Duncan	Kansas State University	mutemaid@hotmail.com
Season Ellison	Texas State University-San Marcos	season@centurytel.net
David J. Eshelman	University of Missouri-Columbia	djenpb@mizzou.edu
Kathryn Farley	Northwestern University	k-farley@northwestern.edu
Shirley Huston Findley	College of Wooster	sfindley@wooster.edu
Anne Fletcher	Southern Illinois University Carbondale	afletch@siu.edu
Matthew Fotis	Illinois State University	mnfotis@ilstu.edu
Constance Frank	Southern Illinois Univ. Carbondale/Western Kentucky College	
Cynthia Frezza	Southern Utah University	frezza@suu.edu
Natalie Goodnow	Southwestern University	goodnow@southwestern.edu
Chris Gray	Iowa Western Community College	cgray@iwcc.edu
Robert Gross	Hobart and William Smith Colleges	gross@hws.edu
Roger Gross	University of Arkansas	rdgross@uark.edu
Liz Gumm	Southwestern University	gumme@southwestern.edu
Kristin Hanson	Louisiana State University	Hawkeye1978@earthlink.net
Kim Harris	William Jewell College	harriskb@william.jewell.college
Kenneth W. Haught	Dickinson State University	Ken.Haught@dsu.nodak.edu
Ann Haugo	Illinois State University	ahaugo@ilstu.edu
Steven Hayes-Pollard		
Bruce Herman	The Ohio State University	Herman.136@osu.edu
Frank Higgins	University of Missouri-Kansas City	
Jakob Holder	Edward Albee Foundation	playwrought@yahoo.com
G.L. Horton	Playwrights Platform, Boston	g.l.horton@mindspring.com
Erika Hughes	University of Wisconsin	erikahughes@students.wisc.edu
Jacob Hutchison	University of Washington	jahutch@uwashington.edu
Daniel Inoyue	Baylor University	Daniel_inoyue@baylor.edu
Pattie Interrante	Oakland College	
Scott Irelan	Southern Illinois University Carbondale	
Scott Irelan	Southern Illinois University Carbondale	masterthespian1@hotmail.com
Tamera N. Izlar	Western Illinois University	directorizlar@aol.com
Dallas Jeffers-Pollei	Illinois State University	djpolle@ilstu.edu
Bill Jenkins	Ball State University	wjenkins@bsu.edu
Kathleen Juhl	Southwestern University	juhlk@southwestern.edu
Rhona Justice-Malloy	Central Michigan University	justi1rd@cmich.edu
Leigh Kennicott	Cerritos College	myhecuba@sbcglobal.net
Karen Kessler	Ball State University	klkessler@bsu.edu
David Kilpatrick	University of Missouri-Columbia	drktg6@mizzou.edu
Bill Kincaid	Western Illinois University	b-kincaid@wiu.edu
Mikko Kivisto	Univ. of Illinois at Urbana-Champaign	mkivisto@uiuc.edu
Kimberly Tony Korol	Northwestern University	ktkorol@yahoo.com

Bethany Larson	Buena Vista University	larsonb@bvu.edu
Greg Learning	Florida State University-Asolo	
Felicia Hardison Londré	University of Missouri-Kansas City	londref@umkc.edu
Elizabeth Long	University of Maryland	elizabethlong3500@yahoo.com
Henry MacCarthy	Ohio University	hm129303@ohio.edu
Ellen MacKay	Indiana University	emackay@indiana.edu
Scott Magelssen	Augustana College	thmagelssen@autustana.edu
Mark Mallett	Richard Stockton College	Mark.Mallett@stockton.edu
Mike Malloney	Oakland College	mikem@oakton.edu
Kathleen McLennan	University of North Dakota	kathleen_mclennan@und.nodak.edu
David McTier	Rockhurst University	david.mctier@rockhurst.edu
Michael Mehler	College of William and Mary	mpmehl@wm.edu
Kristin Messer	University of Maryland-College Park	kmesser@umd.edu
Thom Miller	Southern Illinois University Carbondale	miller64@siu.edu
Tice Miller	University of Nebraska-Lincoln	tmiller1@unl.edu
Tom Mitchell	Univ. of Illinois at Urbana-Champaign	tomitche@uiuc.edu
Dawson Moore	Prince William Sound College	dawsonguy@juno.com
Wendy Mortimer	Ball State University	wmortimer@bsu.edu
Thomas J. Murray	Ball State University	tjmurray@bsu.edu
Leah Napoliello	Trinity University	Lnapolie@aol.com
Kent Neely	Southern Illinois University Edwardsville	kneely@siue.edu
Chuck Ney	Texas State University-San Marcos	cn12@txstate.edu
Dawson Nichols	University of South Carolina	nicholGD@gwm.sc.edu
Teodora Nikolova	University of Wisconsin-Madison	tnnikolova@wisc.edu
Kirsten Ogden	Louisiana State Univ./Univ. of La Verne	kogden@ulv.edu
Michael O'Hara	Ball State University	mohara@bsu.edu
Deidre Onishi	University of Wisconsin	daonishi@wisc.edu
Kevin Orr	University of Ottawa	korr@uottawa.ca
Karen Paisley	Kansas City Repertory Theatre	kcpaisley@mindspring.com
George Panaghi	City University of New York	george.panaghi@yale.edu
Ellen M. Peck	University of Illinois	epeck2@uiuc.edu
Amanda Petrosky	Kansas State University	amandap@ksu.edu
Stacey Pierce	Kansas State University	Pierce518@aol.com
Joshua Polster	University of Washington	joshpolster@mmsn.com
John Poole	Illinois State University	jrpoole@ilstu.edu
George Potter	Indiana State University	gpotter@mymail.indstate.edu
Julie Rae Pratt	Central Missouri State University	pratt@cmsu1.cmsu.edu
Kathy L. Privatt	Lawrence Universtiy	kathy.privatt@lawrence.edu
Jane Purse-Wiedenhoeft	Indiana Univ./Purdue Univ.-Fort Wayne	pursej@ipfw.edu
Joly Puthussery	University of Hyderabad, India	j_puthussery@yahoo.com
Natalie Joy Quesnel	University of Ottawa	Nques080@uottawa.ca
Peter Reed	Florida State University	preed@fsu.edu
Vincent Rhomberg	Southern Illinois University Carbondale	vrhomber@siu.edu

